

Solutions for Smarter Living Powered by Optimus

Smart Living
Starts Here





Thinking *Out of the Box*

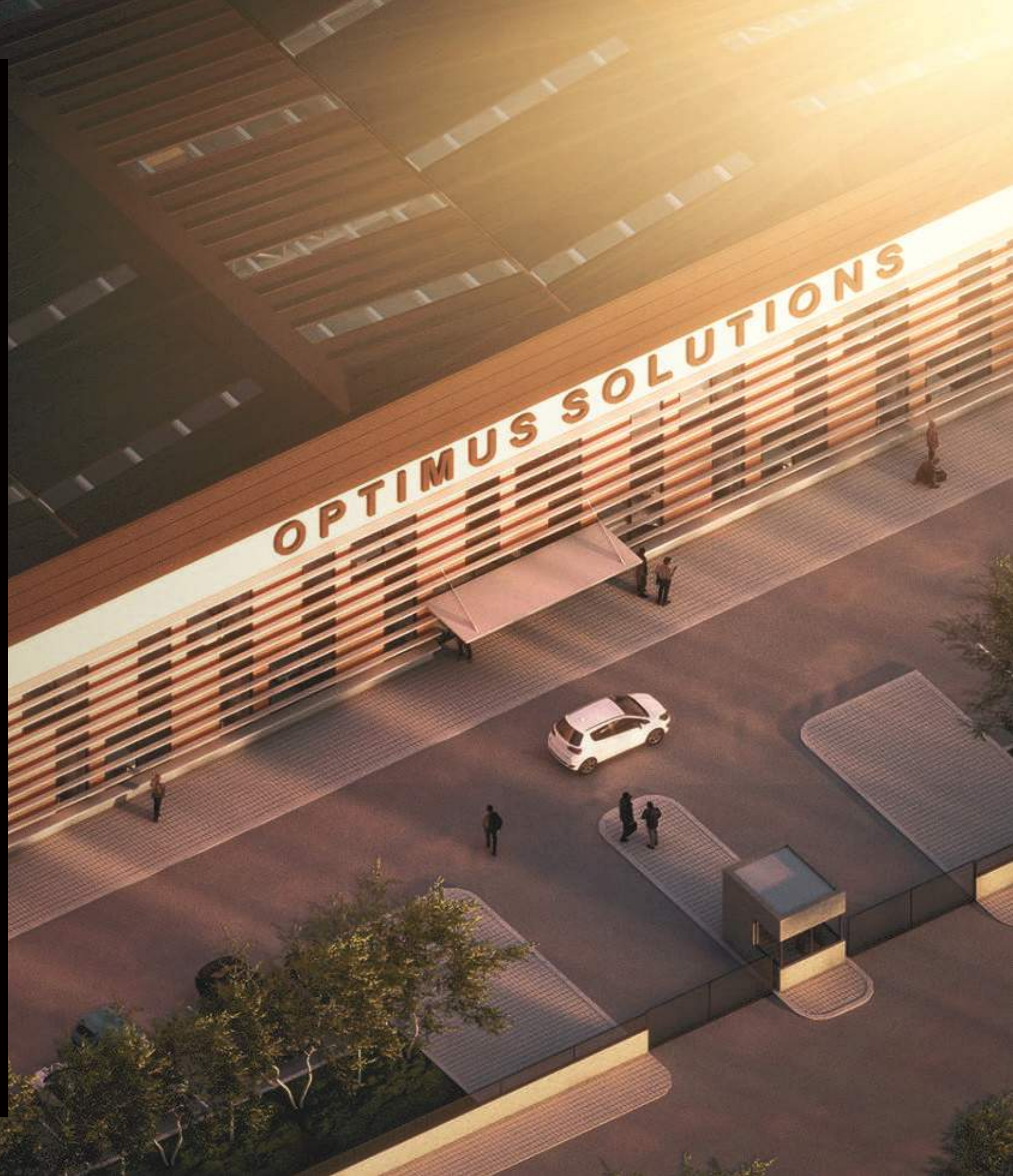
Optimus specializes in the design, development, and manufacturing of future-proof solutions in building and home automation. With 20 years of continuous expertise in the industry and a proven track record of over 2,000 completed projects across various sectors—including hospitals, governmental buildings, data centers, hotels, schools, and sports complexes—we bring unparalleled insights and expertise to every solution we deliver.

In 2020, we combined our in-depth knowledge of the field with a passion for innovation to launch the first generation of **Optimus Solutions** products, powered by our proprietary **Optimus Stack**. This milestone elevated us from a system integrator to a manufacturer, making us one of only seven companies worldwide with its own KNX stack.

Our journey is driven by a dedicated R&D team of over 25 expert engineers and KNX mentors, whose innovative approach has resulted in compact, modular, and multifunctional products tailored to meet diverse needs.

We are committed to growth and innovation, continuously expanding our product portfolio and accelerating investments. Our upcoming **70,000-square-meter production facility** in Ankara, scheduled for completion in 2025, reflects our forward-thinking vision and dedication to shaping the future of building automation.

With a strong focus on innovation and a customer-centric approach, Optimus remains steadfast in addressing both present and future challenges, solidifying its position as a global leader in the building automation industry.





EDGE Automation Switch Series	07
EDGE Touch Panels	13
Universal Interface	15
Combined Actuator	17
Multi Sensor	19
Power Supply	21
PWM LED Driver	23
Digital Input Device	25
KNX IP Router Secure	27
KNX TP Line Coupler	29
KNX AC Gateway	31
Logic Module	33
Product Codes	36

EDGE Automation Switch Series



Extensive Thermostat Features



Modular Configuration



Frameless Design



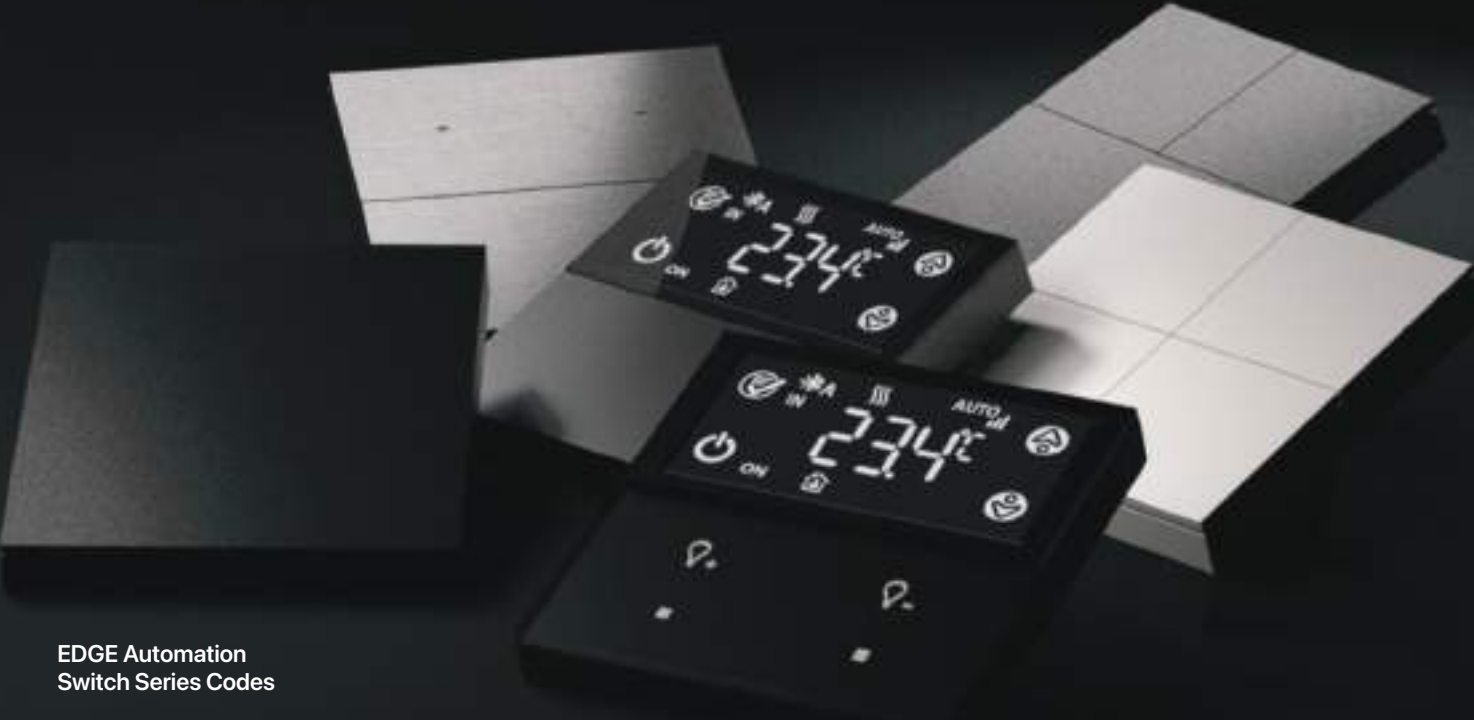
**EDGE Automation Switch Series:
Sharper Technology, Smarter Living**

Perfectly designed for today's fast-paced and dynamic living spaces, the **Edge Automation Switch Series** embodies modern luxury and technological innovation. With its modular and multifunctional design, Edge seamlessly combines aesthetics and functionality, delivering a truly user-centric experience.

Step Into the Future with Edge

The Edge Automation Switch Series is more than just a switch; it's a lifestyle. With intelligent, aesthetic, and flexible solutions, Edge meets the needs of today while setting new standards for the future of smart living spaces.

With Edge, take control and design the future.

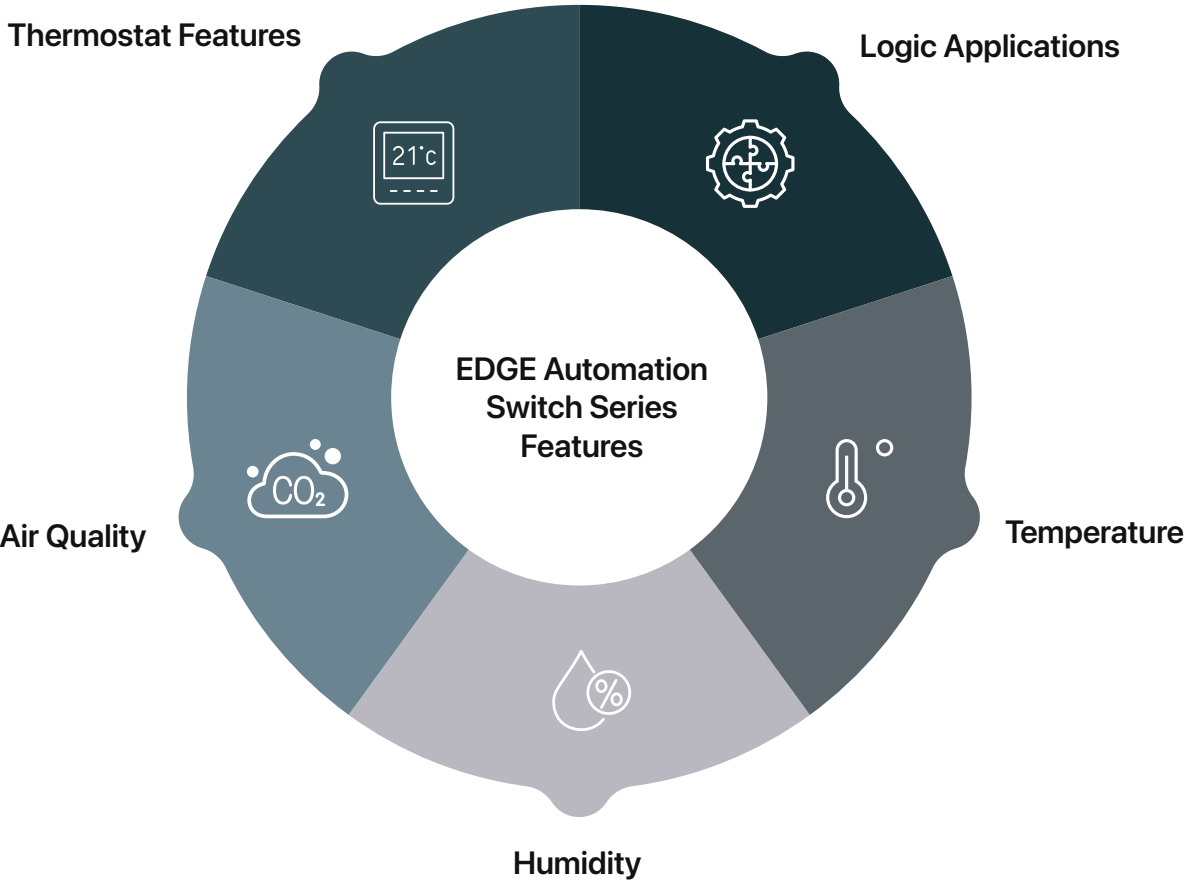


EDGE Automation Switch Series Codes

OPT - SSxxxx - yyy

Thermostat Features

Logic Applications



Switch Sensor / Colors

The Edge series comes with both display screen and non-screen options, catering to minimalist and tech-savvy needs alike. Available in stock with white, black, grey and anthracite grey options, the Edge series can also cater to more colorful design needs upon demand. Available in metal and touch button options it is designed to blend seamlessly into any living space.

Original Size

40 mm

40 mm

80 mm

160 mm

- White
- Gray
- Black
- Touch
- Antracite
- Metallic

Switch Sensor / Smart Functions



Every detail is crafted to prioritize adaptability for modern living. Models offering 1 to 8 buttons support up to 16 functions, creating a fully customizable experience. Square buttons operate up/down, while rectangular buttons operate left/right.

The series includes three different sizes:

- 80x80mm,
- 80x120mm,
- 80x160mm.

Smart Functions for Smart Spaces

The Edge series offers the most elegant way to control intelligent living spaces. Key functions include:

- Switching and light level adjustment.
- Shutter/blind control.
- Value transmission and array value sender.
- Value dimmer.
- Scenario management.
- Thermostat and logic applications.
- Temperature, humidity, and air quality control.
- RGB Status LED.
- Customizable Icon Features.



Icon Examples

Step Into the Future with Edge



White

Black

Metal

Antracite

Gray

Touch

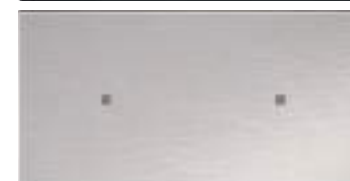
Switch Sensor / Codes



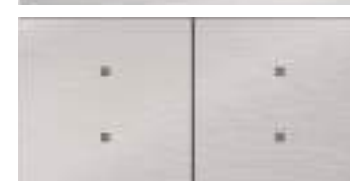
OPT - SS - - - - - 11 - - - - -



D: Display
Only for 1st row



1: Rectangular Frame



2: Square Frame



33: Big Frame
Only for 1&2nd and
3&4th rows

0: No Row
Only for 3,4th row

Material & Color

Plastic

WH: White

BL: Black Matte

SL: Silver

AN: Antracite

Metal

SS: Stainless Steel
Black Matte Base

Accessories

1: Basic

2: Room Thermostat Controller

3: Indoor Air Quality

4: RTC & IAQ

EDGE Touch Panels



Optimized User Comfort



Multifunctional Use with One Touch



Stylish Design



Discover seamless control with the **Optimus Edge Touch Panels**, available in **10-inch** and **8-inch** models. These sleek and modern panels are designed to revolutionize KNX-based home automation systems, offering a powerful blend of functionality and style to complement any smart space.

Both panels boast an elegant design and advanced features, ensuring effortless management of your smart home. The Edge panels enable centralized control of **lighting, HVAC, security, shading systems**, and more—all from a single, intuitive interface.

The **10-inch model** provides an expansive display, perfect for larger installations or spaces where a broad and detailed view of controls is desired. The **8-inch model**, compact yet equally robust, offers the same functionality in a smaller form factor, ideal for tighter spaces or minimalist installations.

Key Features:

- **KNX-Based Integration:** Fully compatible with KNX systems for seamless automation.
- **IoT Connectivity:** Supports integration with smart devices, allowing you to create a unified ecosystem.
- **Versatile Functionality:** Control lighting, climate, blinds, security, and more with a touch.
- **Customizable Interface:** Personalize layouts, icons, and controls for a tailored user experience.
- **Modern Design:** A sleek look that blends into any décor, with durable materials that complement its premium feel.
- **Effortless Setup:** Streamlined installation and commissioning make it easy to get started.
- **Intercom**
- **Mobile Control Features**

	Edge 1.1 10 "	Edge 1.1 8"
CPU	Quad Core ARM Cortex A35 @1.3GHz	Quad Core ARM Cortex A35 @1.3GHz
Operating System	Android 8.1	Android 8.1
Screen Size	10.1"	8"
Microphone	1 with Echo Cancellation	1 with Echo Cancellation
Speaker	2x8 Ohm -2 Watts	2x8 Ohm -2 Watts
Input	5 Digital Inputs	5 Digital Inputs
Knx Bus Connection	KNX-TP / KNX-IP	KNX-TP / KNX-IP
LAN	1	1
IoT Integration	IFTT, Amazon Alexa ,Google Home, Siri Shortcuts	IFTT,Amazon Alexa, Google Home, Siri Shortcuts
Intercom Standart	SIP 2.0 Peer-to-Peer	SIP 2.0 Peer-to-Peer

EDGE Touch Panels Codes

OPT - TP8- 111
OPT - TP10- 111

Universal Interface



Adjustable as
Input / Output



The First Step to
Automation



Universal Interface

The universal interface can be used both as an **input** and an **output** due to its flexible design adapting to different project needs. With the options of **3, 6, and 9 channels**, it offers solutions that meet the needs of both small and large-scale applications. With its **wide range of engineering parameters**, it creates a compatible control mechanism for your systems, meeting engineering needs in various projects. This versatile device is an ideal solution for users seeking **functionality and flexibility** in KNX projects. With its simple design and user-friendly structure, it simplifies installation and configuration processes...

Key Features

- Usable as both input and output
- Wide engineering parameters
- Functional design

Supply Voltage	KNX 30 VDC
KNX Current Consumption	8 mA
Number of Input / Output	Each channel (up to 3, 6, 9) can be configured as input or output
Input Functions	Value Sender, Dimmer, Shutter, Counter
Output Functions	LED (3.3 VDC 2 mA)
Cable Length	Maximum 100 m
Temperature Range	Operation -5...+45 °C Storage -25...+55 °C
Dimensions (W x H x Y)	38 x 41 x 14 mm

Universal Interface Codes

OPT - UI3- 111
OPT - UI6- 111
OPT - UI9- 111

Combined Actuator



High Capacity



Multi-Functional



Compact



Combined Actuator Codes

- OPT - CA4 - 211
- OPT - CA8 - 211
- OPT - CA12 - 211
- OPT - CA16 - 211
- OPT - CA20 - 211
- OPT - CA24 - 211



Combined Actuator

The combined actuator, with various channel options (4, 8, 12, 16, 20, and 24 channels), caters to a wide range of applications and offers **maximum flexibility** in your projects. It allows the control of lighting, curtains/blinds, and heating/cooling systems with a single device, providing significant advantages in energy management and an ease in usage. The actuator has a space-saving design in installation to panels while the **protection** it offers against high currents ensures long-lasting and safe operation. The different channel options make it ideal for both small-scale individual projects and large commercial applications. With its robust design, versatility, and features that simplify system installation, the combined actuator provides a reliable solution for your KNX projects.

Key Features

- High current protection
- Compact design
- Multi-functionality

Supply Voltage	KNX 30 VDC	
KNX Current Consumption	Max. 10mA	
Mounting	DIN Rail	
Number of Output	4, 8, 12, 16, 20 or 24	
Output Switching Currents	16A 277 VAC	
Temperature Range	Operation -5..+45 °C Storage -25..+55 °C	
Dimensions and Weight (WxHxD)		Net - Gross
4 channels	54 x 92 x 64 mm (3 MW)	148g - 173g
8 channels	90 x 92 x 64 mm (5 MW)	233g - 310g
12 channels	108 x 92 x 64 mm (6 MW)	312g - 349g
16 channels	144 x 92 x 64 mm (8 MW)	396g - 438g
20 channels	198 x 92 x 64 mm (11 MW)	541g - 591g
24 channels	198 x 92 x 64 mm (11 MW)	555g - 605g

Multi Sensor



Flat Design



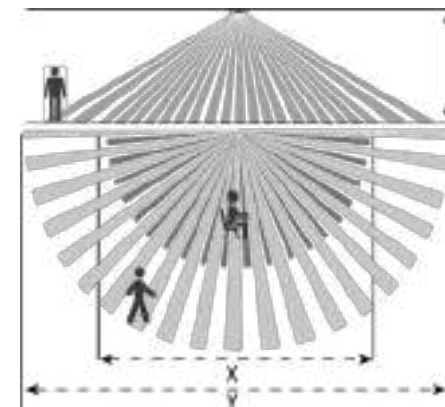
GRMS Presence/
Absence



Multi Sensor



Wide Detection
Range



Model	Standard	Wide Range	High Bay	High Bay	Corridor
Height (H)	2.5-4 m	2.5-4 m	9-12 m	9-12 m	2.5-4 m
Seated Person (X)	4-6 m Ø	8-10 m Ø	14-20 m Ø	14-20 m Ø	
Walking Person (Y)	10-12 m Ø	12-16 m Ø	23-30 m Ø	23-30 m Ø	22-35 m (4-6 m Short Edge)

Multi Sensor

The Multi-Sensor adapts to all types of projects with its four different models designed for different areas/applications: **Standard, Wide Area, Corridor, and High Ceiling** type. With versions featuring **thermostat, humidity measurement, and air quality** detection features, it combines comfort and **energy efficiency**. The sensors deliver precise and dependable results due to their highly sensitive presence detection capabilities. The **modular design** allows for the addition of extension modules, enabling flexible solutions. Its minimalist design enhances the aesthetic appeal of spaces, while its extensive engineering parameters cater to diverse needs. The inactivity **logic function**, specifically designed for hotel rooms offers ease of control for investors and operators.

Key Features

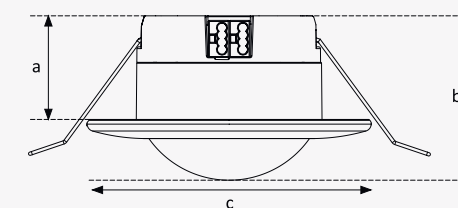
- **Minimalist design**
- **Multi-sensor structure**
- **Wide detection area**
- **Three independent control channels**
- **Modular design**



Multi Sensor Codes

OPT - MSS - 212
OPT - MSC - 212
OPT - MSH - 212
OPT - MSW - 212
OPT - MSS - 211
OPT - MSC - 211
OPT - MSH - 211
OPT - MSW - 211

Supply Voltage	KNX 30 VDC		
KNX Current Consumption	10 mA		
Sensor Type	PIR, brightness, temperature, humidity		
Mounting	Surface or flush mounting		
Mounting Height	2,5-4 m (Standard, wide range type, corridor) 9-12 m (High-bay)		
Brightness Measurement	10...1000 lux		
Temperature Range	Operation -5...+45°C Storage -25...+55°C		
Dimensions	a	b	c
Standard	29 mm	45 mm	78 mm
Wide Range	29 mm	45 mm	78 mm
High-Bay	37 mm	52 mm	78 mm
Corridor	29 mm	45 mm	78 mm
Surface Mount Box		80 mm	45 mm



Power Supply



Real-time Information



Additional Output



Constant Voltage, Current Measurement



Power Supply

The KNX power supply, offered in two capacities: **320mA** and **640mA**, provides reliable energy for your projects. The integrated LED indicators enable instant identification of errors, **providing the ability** for a quick intervention in case of system malfunctions. The **640mA** model provides real-time current information while supplying instant feedback on the system status and with its additional **30VDC output**, it is an ideal solution for powering additional devices. With its simple and sturdy design, the power supply offers a reliable solution for both small and large-scale KNX projects.

Key Features

- Error status indicator
- Real-time current information
- Extra 30VDC output

	OPT - PS64 - 122	OPT - PS32 - 111
AC Voltage Range	190...265 VAC 50 / 60 Hz	190...265 VAC 50 / 60 Hz
Output Voltage - 1	30 V DC (KNX)	30 V DC (KNX)
Output Voltage - 2	30 VDC (without choke)	-
Output Current	640 mA	320 mA
Temperature Range	Operation -5...+45 °C Storage -25...+55 °C	Operation -5...+45 °C Storage -25...+55 °C
Dimensions (W x H x Y)	90 x 92 x 64 mm (5 MW)	90 x 92 x 64 mm (5 MW)
Mounting	DIN - Rail	DIN - Rail

Power Supply Codes

OPT - PS32 - 111
OPT - PS64 - 122

PWM LED Driver



Level Adjustment
Constant Voltage



4 Outputs



PWM LED Driver

The LED driver operates via a constant voltage method with **4 channels**, providing a voltage range of **12-24V**. Each channel offers precise control for **LED lighting**, and by **combining channels**, the total capacity can be increased to accommodate more powerful loads. Its **flexible design** adapts to both **small** and **large-scale** projects. The compact design saves space, and its functional features allow for easy integration into various applications. The LED driver enhances **energy efficiency** while ensuring your lighting systems operate reliably and durably.

Key Features

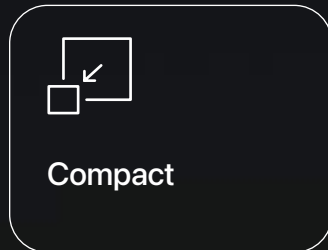
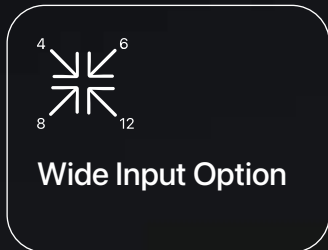
- **Combinable channels**
- **Constant voltage**

Supply Voltage	KNX 30 VDC
KNX Current Consumption	Max. 10mA
Mounting	DIN Rail
Number of Output	4
Output Switching Currents	3A per channels, total 12A 28 VDC (max)
Temperature Range	Operation -5...+45 °C Storage -25...+55 °C
Dimensions (W x H x D)	54 x 92 x 64 mm (3 MW*)
Weight	Net:112g Gross:140g

PWM LED Driver Code

OPT - LD4 - 111

Digital Input Device



Digital Input Device Codes

- OPT - DI4 - 121
- OPT - DI6 - 111
- OPT - DI8 - 121
- OPT - DI12 - 111



Digital Input Device

The Digital Input device, with its space-saving **compact design** occupies **minimal space** in panels and provides easy installation. The digital input device can read both dry contacts and live terminals, addressing a wide range of applications. Available in **4, 6, 8, and 12 channel** options, this device can provide flexible solutions for varying project needs. Due to its multiple data supporting structure, it can easily be integrated with various systems. With its **simple and functional design**, this device offers a reliable monitoring solution for your KNX projects.

Key Features

- **Compact design**
- **Wide input options**

Supply Voltage	KNX 30 VDC
KNX Current Consumption	8mA
Mounting	DIN Rail
Number of Output	4,8 ch for 230V AC/DC 6,12 ch for Dry Contact
Input Functions	Value Sender, Dimmer, Shutter, Counter
Dimensions (WxHxD)	4 Channels, 6 Channels 8 Channels, 12 Channels
	54 x 92 x 64 mm (3 MW) 90 x 92 x 64 mm (5 MW)
Temperature Range	Operation -5...+45 °C Storage -25...+55 °C
Weight	Net Gross
4 Channels	105g 130g
6 Channels	107g 132g
8 Channels	153g 185g
12 Channels	155g 187g

KNX IP Router Secure



KNX Secure
Compatible



Compact



No Extra Power
Required



KNX IP Router Secure

The KNX IP Router Secure, with its space-saving 1 module width design, occupies **minimal space** in panels and **provides easy installation**... It operates without the need for an additional **power supply, simplifying system setups**. Thanks to its KNX Secure feature, it supports high security standards for data transmission, **protecting your system from external threats**. This secure and practical solution facilitates communication and integration in your KNX projects.

Key Features

- **Compact design**
- **KNX Secure compatibility**
- **No need for extra power supply**

Supply Voltage	KNX 30 VDC
Environmental Requirements	Operation -5...+45 °C Storage -25...+55 °C Rel. humidity (non-condensing) %5...%93
Mounting	DIN Rail 1 Module Width (18 mm)
Ethernet Specifications	100BaseT (100MBit/s) Supported protocols: ARP, ICMP, IGMP, UDP/IP, TCP/IP, DHCP and Auto IP
KNX Specifications	KNX Security: (AES-128), Tunneling V2, Core V2 Up to 8 KNXnet/IP Tunneling Connections Simultaneously Extended filter table for main group: 0..31 Max. APDU length: 55
KNX Current Consumption	20 mA - KNX Bus

KNX IP Router Secure Code

OPT - IPR - 121

KNX TP Line Coupler



Coupler Function



Compact



KNX TP Line Coupler

The KNX TP Line Coupler, with its space-saving 1 module width design, occupies **minimal space** in panels and provides easy installation. The test buttons on the front side of the device allow for **quick** and **practical system checks**. This feature simplifies installation and maintenance processes, ensuring a more time-efficient workflow. With its reliable performance and functional design, it ensures seamless data communication between different lines in KNX systems. Its compact size and **user-friendly features** make it an ideal solution for both small and large-scale projects.

Key Features

- **Compact design**
- **Test buttons**

Supply Voltage	KNX 30 VDC
Environmental Requirements	Operation -5...+45 °C Storage -25...+55 °C Rel. humidity (non-condensing) 5...93 %
Mounting	DIN Rail 1 Module Width (18 mm)
KNX Specifications	Extended filter table for main group 0...31 Max. APDU length: 55
KNX Current Consumption	KNX main line approx. 5 mA KNX sub line approx. 3 mA
Connection	KNX TP connection



KNX TP Line Coupler Code

OPT - LC - 111

KNX AC Gateway



Wide Engineering Parameters



Compatible with Various Brands



KNX AC Gateway

Our KNX AC Gateways are compatible with air conditioning systems of **Samsung, Mitsubishi, and Daikin**, connecting **different brands** to the KNX network. With **several logical functions**, it makes air conditioning system management more **flexible and efficient**. The device features three digital inputs that can be used for various purposes. Additionally, it allows bidirectional communication with **air conditioning indoor units**, ensuring more efficient and accurate operation of the system.

Key Features

- Wide engineering parameters
- Digital inputs
- Multi-purpose logical functions

Supply Voltage	KNX 30 VDC
KNX Current Consumption	10 mA (max)
Mounting	Interior
Cable Length	Max 100 m
Temperature Range	Operation -5...+45 °C Storage -25...+55 °C Relative humidity %5...%90
Dimensions (W x H x D)	66 x 66 x 21,5 mm

KNX AC Gateway Codes

- OPT - ACG - 111
- OPT - ACG - 121
- OPT - ACG - 122
- OPT - ACG - 131

Logic Module

0110100
10</>01
0101011

Extensive Logic Functions



Logic Module

The Logic Module provides flexible and efficient control in KNX projects with its extensive range of logic function options. Serving as a complementary product in specialized projects, it effortlessly performs all required logic operations in complex systems. Its compact design minimizes space requirements, making it easy to use in any environment.

Key Features

- Logic functions tailored to every need
- Complementary product
- Compact housing

Supply Voltage	KNX 30 VDC
KNX Current Consumption	8 mA
Environmental Requirements	Operation -5...+45 °C Storage -25...+55 °C
Dimensions (W x H x D)	38 x 41 x 14 mm
Functions	Inactivity Logic, Filter/Delay, Present, Logic Gates (AND, OR, XOR, XNOR, NAND, NOR), Gate, Min/Max Comparator, Rthreshold, Comparator, Data Parser, Multiplexer, Demultiplexer, Staircase, and Scenario Controller.

Product Codes

SWITCH SENSOR

OPT-SSxxx-yyy

TOUCH PANEL

OPT-TP8-111
OPT-TP10-111

UNIVERSAL INTERFACE

OPT-UI3-111
OPT-UI6-111
OPT-UI9-111

COMBO ACTUATOR

OPT-CA4-211
OPT-CA8-211
OPT-CA12-211
OPT-CA16-211
OPT-CA20-211
OPT-CA24-211

MULTI SENSOR

OPT-MSS-212
OPT-MSC-212
OPT-MSH-212
OPT-MSW-212
OPT-MSS-211
OPT-MSC-211
OPT-MSH-211
OPT-MSW-211

POWER SUPPLY

OPT-PS32-111
OPT-PS64-122

PWM LED DRIVER

OPT-LD4-111

DIGITAL INPUT DEVICE

OPT-DI4-121
OPT-DI8-121
OPT-DI6-111
OPT-DI12-111

KNX IP ROUTER SECURE

OPT-IPR-121

KNX TP LINE COUPLER

OPT-LC-111

KNX AC GATEWAY

OPT-ACG-111
OPT-ACG-121
OPT-ACG-122
OPT-ACG-131

LOGIC MODULE

OPT-LM-111

Optimus Solutions
2024 / 2025

Emek Mah. Ordu Cad. No:4 34785
Sancaktepe, İstanbul / Türkiye

P: +90 444 11 05

M: info@optimusst.com

